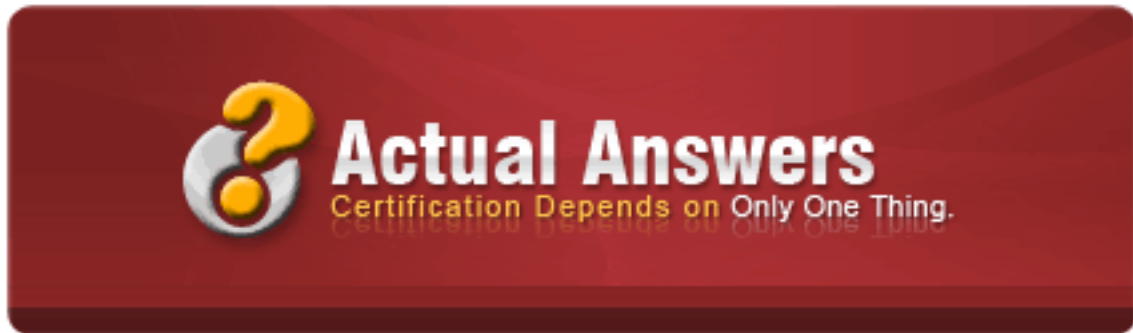


VMware VCP-510

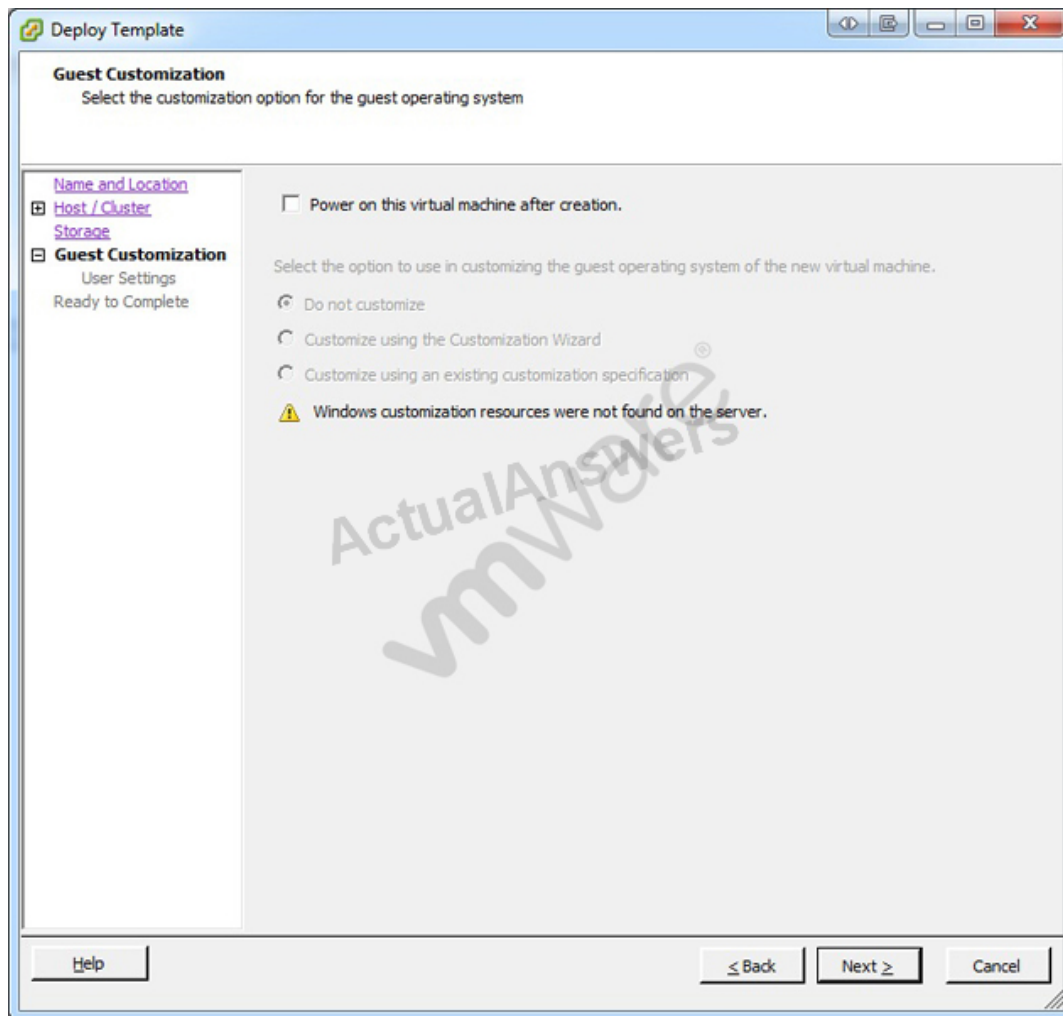


VMware Certified Professional on vSphere 5

Version: Demo 9.9

QUESTION NO: 1

Click the Exhibit button.



An administrator has implemented a new vSphere 5 environment and is deploying their first Windows 2008 R2 template. When running the Deploy Template wizard, the error shown in the exhibit appears.

What can be done to correct the problem?

- A. Select the correct guest OS setting for the virtual machine.
- B. Windows 2003 x64 cannot be customized.
- C. Download and install the Microsoft Sysprep tool into the virtual machine to be customized.
- D. Download the Microsoft Sysprep tool to the appropriate vCenter Server directory.

Answer: A

Explanation: <http://communities.vmware.com/thread/45830>

QUESTION NO: 2

A company is planning an upgrade from vSphere 4.x to vSphere 5. They currently have three dual CPU servers licensed for ESXi 4.1 Advanced

Each server has 256GB of RAM installed.

Their virtual machines are sized three ways.

Light. 1v CPU, 4GB RAM

Medium. 2v CPU, 8GB RAM

Heavy. 4 vCPU, 12GB RAM

The Production workload consists of.

20 Light servers

20 Medium servers

2 Heavy servers

The Development workload consists of.

10 Light servers

10 Medium servers

How will vSphere 5 licensing impact their upgrade? (Choose two.)

- A. They will need to purchase additional ESXi licenses.
- B. They will be able to reduce their power consumption.
- C. They will be restricted from powering on additional virtual machines.
- D. A license upgrade will be needed to add vCPUs to the Heavy servers.

Answer: B,C

Explanation:

QUESTION NO: 3

An administrator wants to adjust disk resource allocation to ensure proper storage performance.

Which two mechanisms are available? (Choose two.)

- A. Shares
- B. Guarantee IOPs
- C. Limit IOPs
- D. Reservation

Answer: A,C

Explanation:

QUESTION NO: 4

An administrator wants to determine the current network adapter configuration for an uplink on an ESXi 5.x host.

Which three items can be viewed from the Network Adapters section of the Configuration tab, using the vSphere Client? (Choose three.)

- A. VLAN configuration
- B. Adapter Driver
- C. Actual speed and duplex
- D. Adapter Name
- E. vSwitch configuration

Answer: B,C,D

Explanation:

QUESTION NO: 5

What are two requirements for a fully functional vSphere HA cluster? (Choose two.)

- A. vCenter installed or a vCenter Server Virtual Appliance (vCSA) deployed .
- B. Access to local storage for each host in the cluster.
- C. Static IP addresses entered in each hosts file in the cluster.
- D. A minimum of one VMkernel port per host.

Answer: A,D

Explanation:

QUESTION NO: 6

What happens to the total number of shares available to the children of a resource pool if a virtual machine is powered off inside the resource pool?

- A. It remains the same
- B. It decreases
- C. It increases
- D. It remains the same only if a custom share value was configured

Answer: B

Explanation:

QUESTION NO: 7

Which types of traffic can a VMkernel port be enabled to carry on a ESXi 5.x host? (Choose three.)

- A. NFS
- B. Fault Tolerant
- C. Management
- D. iSCSI
- E. vMotion

Answer: B,C,E

Explanation:

QUESTION NO: 8

Select three of the steps for configuring iSCSI Software Initiator multipathing when load balancing with a single vSphere standard switch. (Choose three.)

- A. Change the Path Selection Policy to Round Robin (VMware)
- B. Enable Override switch failover order
- C. Enable Route based on IP Hash
- D. Enable iSCSI port binding on the VMkernel object or objects
- E. Add VMkernel adapters to the iSCSI Network Configuration

Answer: A,B,E

Explanation:

QUESTION NO: 9

Which three statements regarding Network I/O Control (NIOC) are accurate? (Choose three.)

- A. NIOC enforces traffic bandwidth limits on the overall vDS set of dvUplinks.
- B. NIOC limits maximum throughput control on connected virtual machines.
- C. Load based teaming efficiently uses a vDS set of dvUplinks for network capacity.
- D. Isolation provides priority to any one traffic flow.
- E. Relative shares fairly allocates available bandwidth among multiple flows.

Answer: A,C,E

Explanation:

QUESTION NO: 10

A company has converted several physical machines to virtual machines but are seeing significant performance issues on the converted machines. The host is configured with sufficient memory and storage does not appear to be a bottleneck. Which metric can be checked to determine if CPU contention exists on an ESXi 5.x host?

- A. %RUN
- B. %WAIT
- C. %USED
- D. %RDY

Answer: D

Explanation: